

**One in five Oklahoma children goes to bed hungry**



**Annual Report 2008 - 2009**

*Fighting Hunger, Feeding Hope*

**FOOD BANK**

Community **FOOD BANK** of Eastern Oklahoma





## Board of Directors

### President

Doug Padgett  
Pendergraph, Inc.

### Vice President

Margaret Butler  
Butler & Butler

### Treasurer

Richard Ficken  
Williams Companies

### Secretary

Scott Lewis  
Optimus Corp.

Barry Abels  
Jewish Federation of Tulsa

David Askins  
Community Volunteer

Charles Chastain  
SpiritBank

Donna McElroy Dutton  
McElroy

Joe Jarrett  
Community Volunteer

Daniel Llanos  
Nueva Esperanza UMC

Milo Reno  
Loaves & Fishes

Colleen Almeida Smith  
Tulsa World

Sherri Smith  
AGAPE Mission

Bill Witt  
Borden Dairy

Willie Mary Walters  
Community Care of Sapulpa

### Ex-Officio Members

Bill Copeland  
Dollar Thrifty Automotive Group

Keith Kelly  
AG Equipment Company

Judi McCoy  
Attorney

## Advisory Board

Robert S. Doenges  
Doegnes Ford Lincoln Mercury

George Kaiser  
Kaiser-Francis Oil Company

Kenneth Levit  
George Kaiser Family Foundation

Paula Marshall  
Bama Foods Limited Partnership

Evelyn Nienhuis  
Community Volunteer

John Strong, Jr.  
The Grace and Franklin  
Bernsen Foundation

Peter Walter  
Walter Real Estate

## To Our Friends:

Since the beginning of the organization in 1981, the Board, staff and volunteers of the Community Food Bank of Eastern Oklahoma have worked tirelessly to provide food and other grocery necessities to help feed and care for thousands of our neighbors living in Eastern Oklahoma whose incomes do not allow for basic family needs.

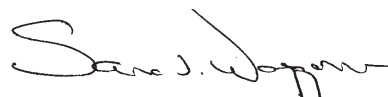
Each year we are faced with an increase in need. Fiscal Year 2008-2009 was the worst year the Food Bank has faced in the 27 years we have been in operation. As we faced a changing and unstable economy, and the prospects of traditional donated food sources shrinking, our Partner Programs were reporting to us, on average, a 40 percent increase in the number of people coming to them for help. The majority of new requests for help were coming from people who had never asked for help from a food pantry before.

The Community Food Bank of Eastern Oklahoma turned to the folks we always turn to in an emergency: those of us who have more than we can use. Foundations stepped up with additional money for us to purchase food; schools, companies and organizations held food drives and donated more food than any other year; our Plant A Row for the Hungry blossomed with new donors; and we started a very successful retail grocery store pick-up program with a major retailer(should we mention the name?) that provides the Food Bank with meat, produce, dairy and deli product.

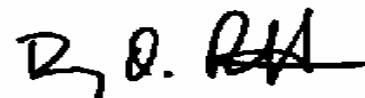
By the end of the year our distribution increased by 23 percent over the previous year. We distributed 9,546,435 pounds of food, enough to make 7,458,152 meals. These meals were feeding 50,000 people each month.

Equally as important during the year was the updating of our Mission Statement and Strategic Plan to reflect our future path toward realizing our Vision of "Food Security, with Dignity, for all Eastern Oklahomans." Our 2009-2012 corporate goals of obtaining nutritious food from diversified sources, distributing products to meet recipients' needs and enhance our role as a catalyst in building and empowering communities to bring about food security address our revised Mission Statement, "Feed the hungry of Eastern Oklahoma through a network of Partner Programs and engage our communities in ending hunger."

We know our many financial contributors, food and in-kind donors and volunteers are those who keep our Vision tangibly alive. We are very fortunate to have their support and are most appreciative of that support. Working together we have accomplished much. We are ready to do even more in the future.



**Sara J. Waggoner**  
Executive Director



**Doug O. Padgett**  
President, Board of Directors

# Fighting Hunger . . .

Fiscal year 2009 was a challenging one for Oklahoma's hungry

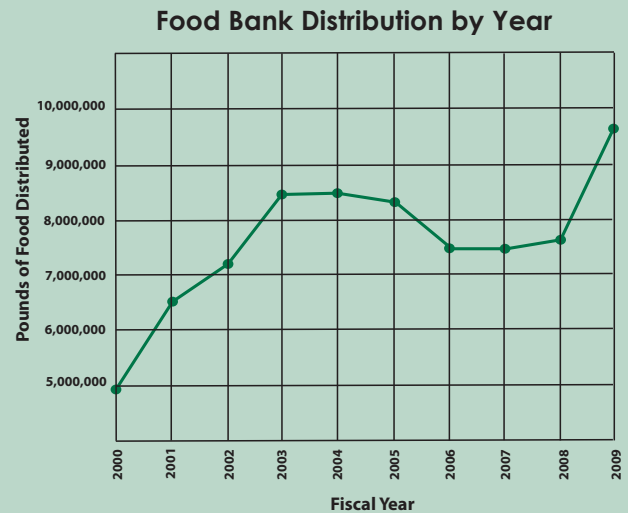
According to the USDA, Oklahoma was the eighth **hungriest state** in the union.

Unemployment **jumped 71** percent, from **3.8** to **6.5** percent.

Enrollment in the Supplemental Nutrition Assistance Program (SNAP), formerly known as Food Stamps, reached an **all-time high**

The number of people seeking food assistance **rose by 40** percent

The Food Bank distributed **23 percent more food** this year, more than any other year in our history



# . . . Feeding Hope

When faced with these challenges, the the Community Food Bank of Eastern Oklahoma worked tirelessly to keep up with the increase in need.

## Fiscal Year 2009 by the Numbers:

**3** new **Kids Cafe Programs** opened

**4,397** supporters contributed financially to the Food Bank with gifts ranging from \$1 to \$238,000

**477** individuals, schools, businesses, faith-based and civic organizations raised **295,548** pounds of food through food drives

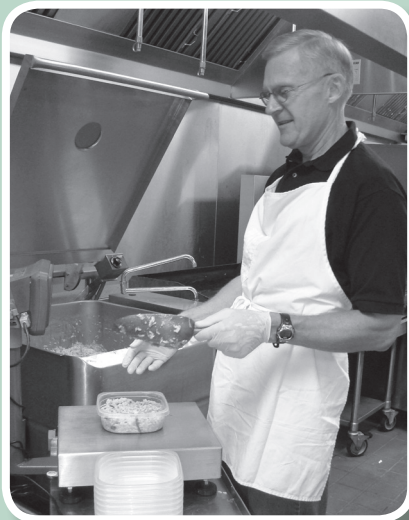




**3,785** children fed at **108** sites weekly through our **Food 4 Kids Backpack Program**, **43** percent more than last year



**6,367** Volunteers saved us the expense of hiring **17** full-time employees by donating **32,947** hours of their time, **47** percent more than last year



**36,129** meals prepared in our Culinary Center as part of our **Value-Added Processing Program**

**1,102,202** pounds of food purchased as part of our **Purchased and Staple Food Program**

**1,039,880** pounds of fresh produce distributed

**3,981,161** pounds of USDA commodities distributed, **63** percent more than last year

**132** businesses donated in-kind services and products saving us \$52,000

**9,546,435** pounds of food distributed, enough to make **7,387,839** meals, **23** percent more than last year



## Our Partners in Fighting Hunger, Feeding Hope

### Adair

Adair County Resource Center  
Daystar Community Services  
Emmanuel Food Pantry  
Fellowship Baptist Church  
The Hope Center

### Cherokee

Bread of Life/Tahlequah  
Care Food Pantry, Inc. \*  
Cherokee Nation Youth Shelter  
Cookson Hills CAF/Tahlequah  
Cookson Hills Center \*  
Help In Crisis Shelter \*  
OK United Meth. Children's Home

### Choctaw

Goodland Presbyterian Home  
Grant Community Center  
Kiamichi Opportunities  
Little Dixie/Comm. Action Agency  
Sawyer Senior Citizens Center  
Sharing Hope in Hugo  
Soper Senior Citizens

### Craig

Craig County Detention Center  
Craig County Salvation Army  
Grand Lake Community Ministry  
Home of Hope \*  
Hope Housing/Vinita  
Vinita Senior Citizen Center

### Creek

Bristow Presbyterian Church  
Bristow Social Services Inc.  
Community Care of Sapulpa \*  
CREOKS MHS/Sapulpa  
Depew Senior Citizens Center  
First Baptist Church/Drumright  
First Baptist Church/Sapulpa  
First Church of God in Christ  
First Presbyterian Church/Sapulpa  
First UMC/Depew  
First UMC/Sapulpa  
Kellyville UMC  
Mannford Ministerial Alliance  
Mounds Senior Center  
Salvation Army/Sapulpa \*  
Sapulpa SDA Church  
Slick Senior Citizens

\* Indicates agencies with 2 or more different programs

South Heights Baptist Church  
Youth Services of Creek County

### Delaware

Brush Creek Youth Ranch  
Christian HELP Center  
Colcord Senior Citizens  
Community Christian Care Ctr.  
Cookson Hills Christian School  
DOC Services/Grove  
House of Hope  
Jay Senior Citizens Center  
New Lifehouse  
Oaks Indian Center

### Haskell

Greater Dimensions Outreach  
Kibois CAF Women's Shelter  
Kibois Stigler Group Homes \*  
Sandridge Pentecostal Church  
The Joseph Project \*  
Whitefield Senior Citizens

### Latimer

Calvary Baptist Church  
Kibois Community Action, Inc.  
New Life/Wilburton \*  
Wilburton Group Home

### LeFlore

Bethel Baptist Church  
Catholic Charities/Poteau  
Fanshawe Freewill Baptist  
First Baptist Church/Heavener  
Grace Cottage  
Harvest Hill Assembly of God  
Kiamichi Valley Ministerial Alliance  
Kibois CAF Pantry  
LeFlore County Youth Services  
Panama Senior Citizens  
Pocola Senior Citizens  
Poteau Church of Christ  
Salvation Army/LeFlore Co.  
Sugarloaf Christian Fellowship \*  
Victory Worship Center  
Women's Crisis Services

### Mayes

Boys & Girls Club of Green Ctry \*  
CARD Seniors/ Pryor  
CARD/Pryor  
Community Outreach Center \*

Ketchum United Methodist Church  
Locust Grove Ministerial Alliance  
Pryor Ministries Center

### McCurtain

Broken Bow Boys & Girls Club  
Eagletown Boys & Girls Club  
Eagletown Senior Citizens Center  
First Baptist Church/Broken Bow  
Golden Senior Citizens  
Hand to Hand  
Haworth Senior Citizens  
Kiamichi Youth Services, Inc.  
Moon Church of God \*  
SOS For Families  
Wright City Senior Citizens

### McIntosh

Calvary Baptist Boy's Ranch  
Checotah Methodist Mission  
Deep Fork CAF/Eufaula  
God's Helping Hands/LAMA  
Jesus' Helping Hands  
Northfork Residential Care  
Westside Free Will Baptist

### Muskogee

Ark of Faith Foundation \*  
Boulevard Christian Church  
C-Hope Ministries  
Catholic Charities/Muskogee  
Central Church of Christ  
Church Central  
Church of the Living Water  
Ezra House \*  
First Baptist Church Muskogee \*  
Green Country Respite Care  
Landmark Bible Church  
MCM Community Pantry  
MCM Meals on Wheels

Monarch Inc.  
Muskogee Church of Christ  
Muskogee Co. CAF  
Muskogee Co. Youth Services  
Muskogee SDA Church  
Pioneer Free Will Baptist  
Salvation Army \*  
St. Paul UMC  
Trinity Baptist Church  
Women In Safe Homes

### Nowata

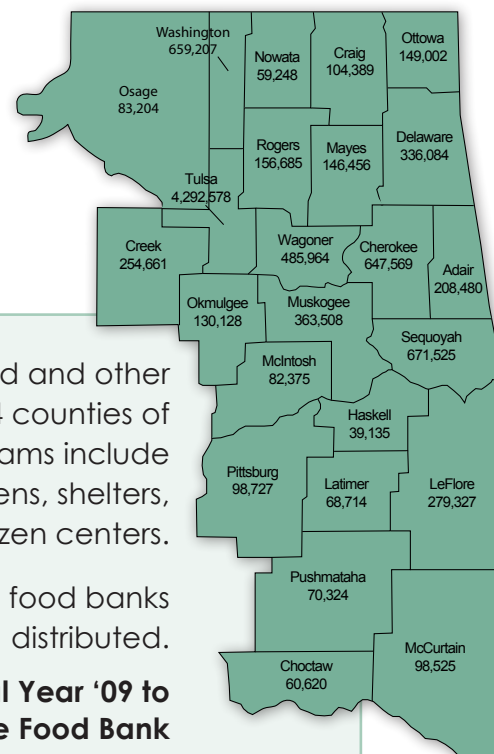
Emmanuel Chapel  
Living Word Family Church  
Nowata SDA  
Trinity Full Gospel Church

### Okmulgee

CREOKS MHS/Okmulgee  
Crosstown Pentecostal Holiness  
Deep Fork CAF/Okmulgee  
First Baptist Church/Okmulgee  
First UMC/Okmulgee  
Henryetta Church of Christ  
Okmulgee Co. Family Rsrce Ctr.  
Okmulgee Co. Homeless Shelter  
St. Anthony Catholic Church  
Two Rivers NATC

### Osage

Christ's Cupboard/Hominy  
Christ's Cupboard/Pawhuska  
Hulah Lake Senior Center  
Lighthouse Family Worship Ctr  
Pawhuska Senior Citizens  
Prue Senior Citizens  
SEAC  
Shirley Cook Mem. Food Bank  
UMC Circle of Care  
West Osage Seniors



The Food Bank distributed 9,546,435 pounds of food and other grocery items to 450 Partner Programs in these 24 counties of Eastern Oklahoma during Fiscal Year 2009. These programs include emergency food pantries, soup kitchens, shelters, low-income after-school programs and senior citizen centers.

Another 3,361,498 pounds distributed to affiliate food banks for a total of 12,907,933 pounds distributed.

**Pounds Distributed in Fiscal Year '09 to the 24 Counties Served by the Food Bank**

Youth Services of Osage County

**Ottawa**

Abounding Faith Ministries Inc  
Community Crisis Center  
DOC Services/Miami  
Hope Housing/Miami  
Miami Tribal Nutrition Center  
NE OK Council on Alcoholism  
North Miami First Baptist Church  
Ottawa Co. Nutrition Coalition  
ROCMND Area Youth Shelter  
ROCMND Group Home  
Salvation Army/Miami

**Pittsburg**

EOYS Detention Center  
First Christian Church/McAlester \*  
Friendship House  
Gene Heathcock Comm. Ctr.  
Grand Ave. UMC \*  
Hospitality House of Oklahoma  
Indianola Senior Citizens  
John 6:13/All Saints Episcopal  
Kiowa Emergency Pantry  
McAlester Alcoholism Council  
McAlester Care Center  
McAlester Group Home  
Salvation Army/McAlester  
Shared Blessings \*  
Victory Park Baptist Church  
Youth Emergency Shelter

**Pushmataha**

Finley Community Center  
First Baptist Church/Antlers \*  
Honobia Senior Citizens  
Rattan Senior Citizens Center  
Rivers of Water Harvest  
Sobol Baptist Church \*

**Rogers**

Blue Starr Church of Christ  
Claremore SDA Church  
First UMC/Claremore  
Good Samaritan Ministries  
Lakeside Full Gospel Fellowship  
Life Changer Church  
Oologah UMC

**Sequoyah**

Boys & Girls Club/Gore \*  
Boys & Girls Club/Sequoyah Co. \*  
Catholic Charities/Sallisaw  
Cookson Hills CAF/Sallisaw  
Evening Shade Comm. Center  
First Assembly of God/Muldrow  
Marble City Community Pantry  
Members in Christ/Vian  
Opportunity House/Sallisaw  
United Methodist Boys Ranch

**Tulsa**

American Red Cross  
Anchor of Hope Fellowship \*  
Antioch Baptist Church  
Apostolic Tabernacle of Tulsa  
Arms Around BA  
Associated Centers For Therapy \*  
Bethel SDA Community Service  
Bixby Community Outreach Ctr.

Broken Arrow Assembly  
Broken Arrow Church of Christ  
Broken Arrow Neighbors  
Brown Child Development Ctr.  
Calvary Temple Assembly of God  
Camp Fire East  
Catholic Charities/Tulsa  
Center Point  
Christ For Humanity  
Christ the Lamb Miracle Church  
Christview Christian Church  
Church of St. Mary  
Colberts Community Resource  
Community of Christ  
Comerstone Free Will Baptist Church  
Courtyard Church/Skiatook  
Crossroads, Inc.  
Crosstown Church of Christ  
DVIS  
Dayspring Villa Women's Shelter  
The Dream Center  
Emergency Infant Services  
Evangelistic Temple/Storehouse  
Faith Mission IGC  
Families of Murdered Children \*  
Family & Children's Services Choices  
Family & Children's Services FLE  
Family & Children's Services FSATP  
Family & Children's Services Headstart \*  
Family & Children's Services Midtown  
Family & Children's Services North \*  
Family & Children's Services South \*  
Family & Children's Services Women in Recovery \*  
First Baptist Church/Owasso  
First Baptist Church/Tulsa  
First Evangelical Lutheran Church  
First UMC/Bixby  
Fishermen's House Church  
Friendship Resource Center  
Garnett Church of Christ  
Gateway Foundation  
Gospel Tabernacle Church of God in Christ  
HOW Foundation  
Helping Hand Ministry  
Higher Esteem  
Homelife Association \*  
Hospice of Green Country  
Housing Partners of Tulsa  
Hutcherson Family YMCA  
Iron Gate Trust  
Jenks Church of Christ  
John 3:16 Family Ministry  
John 3:16 Mission Inc.  
John Knox Presbyterian Church  
Kendall Whittier, Inc.\*  
Lawnwood Free Will Baptist  
Leonard United Methodist Church  
Life Adult Day Care Center  
Loaves and Fishes  
Love Heals Church  
Madonna House  
Manna House  
Margaret Hudson Program  
Meals On Wheels/Metro Tulsa  
Members In Christ Assembly/Tulsa  
Memorial Drive Church of Christ

Metropolitan Tulsa Urban League  
Mt. Zion HELP Project  
NATL/Tulsa Works  
Neighbor for Neighbor  
Neighbors Along The Line  
New Birth Tabernacle UPC  
New Faith/Crestview  
New Hope Baptist Church  
Northeast Meals on Wheels  
Nueva Esperanza UMC  
Oasis Inc. Adult Day Services  
Open Bible Fellowship  
Operation Share/Immanuel Baptist Church  
Osage Hills Christian Church  
Owasso Baptist Children's Home  
Owasso Community Resources  
Palmer Continuum of Care  
Paradise Baptist Church  
Parent Child Center \*  
Parish of St. Jerome's  
Park Plaza Church of Christ  
Parkside Pantry  
Parkside/TCAT \*  
Potter's Clay Mission  
Red Fork Baptist Church  
Resonance Center for Women  
Restore Hope Ministries  
Ribbon of Blue Ministries  
Ronnie's Place of Hope  
STEPS Resource Center  
Safe Haven  
Safe Haven/Altamont  
Salvation Army/Adult Rehab Ctr.  
Salvation Army/Red Shield  
Salvation Army/Sand Springs  
Salvation Army/TSSC  
San Miguel School  
Sand Springs Community Service \*  
Sheridan Road Baptist Church  
Souls Harbor Church  
South Peoria Neighborhood House  
Special Kids  
Springs Inc.  
St. Clements Community Outreach  
St. Joseph Residence  
St. James Presbyterian Church  
St. Paul's Manna Meals  
St. Thomas More Catholic Church

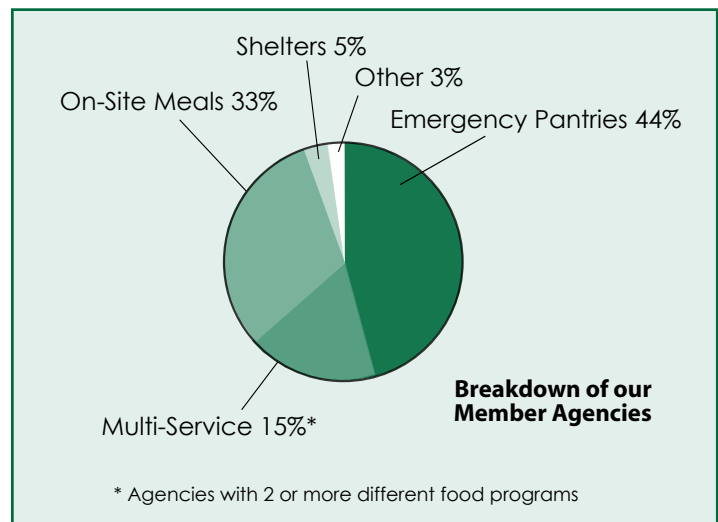
Standing in the Gap  
The Bridges Foundation  
The Ministry Center  
Timothy Baptist/Operation PIN  
Triumph Worship Center  
Tulsa Boys Home  
Tulsa CARES  
Tulsa County Social Services  
Tulsa Day Center for Homeless  
Tulsa Indian UMC  
Tulsa Jaycees  
Tulsa SPCA  
Tulsa Zoo Friends  
Twelve & Twelve Transition House  
UCC Owasso  
UMC Circle of Care  
VCC Overcomers Group  
Victory Christian Center  
Vision of Faith Church \*  
Volunteers of America  
Walker Hall  
West Tulsa Salvation Army  
Western Neighbors  
World Won Ministry \*  
Youth Services of Tulsa

**Wagoner**

Abundant Rain Ministries  
CARD/Coweta  
Lake Crest House of Prayer  
Okay Area Senior Citizens  
Wagoner Area Neighbors  
Wagoner Comm. Outreach \*  
Wagoner SDA Church

**Washington**

Abundant Life/Bartlesville  
Adams Blvd. Church of Christ  
Agape Mission \*  
ARC Group Homes  
Boys & Girls Club/Bartlesville  
Concern Child Learning Center  
Concern Emergency Services  
Lighthouse Outreach Ctr./Bartlesville  
Mary Martha Outreach  
New Life Food Center  
Salvation Army/Bartlesville \*  
Warriors for Christ  
Washington/Nowata Nutrition Prg.  
Youth & Family Services



# Food Donors

These are the local and national food industry companies who have donated food this fiscal year.

## National Food Companies

Campbell Soup Company  
The Clorox Company  
Columbia Fresh Produce Sales  
ConAgra Consolidated  
ConAgra Grocery Products  
Healds Valley Farms  
Heinz North America  
Kellogg Company  
Kraft NA-Nabisco Division  
Kraft National Claim Center  
Mountain King Potatoes  
P and K Services, LLC  
Pepsi-Cola North America  
The Procter & Gamble Company  
Quaker/Pepsico Beverage & Food  
Tropicana Products  
Tyson Foods, Inc.  
Unilever  
Walgreen Company  
Western Veg-Produce Inc.

## Local Food Companies

AKIN'S Natural Foods Market  
Albert G's Bar-B-Q  
Allen's Inc.

American Gold Label Foods  
Andolini's Pizza  
Back Yard Burgers  
Bama Foods Limited Partnership  
Ben E. Keith  
Benton County United Way  
Big Lots  
Blue Bell Creameries Inc.  
BOK Center  
Borden  
Byrd Middle School Cafeteria  
CCF Brands, Inc.  
Central High School Cafeteria  
The Cheesecake Factory  
Chicken of the Sea International  
Chipotle Mexican Grill  
The Clorox Sales Company  
Crystal Farms  
East Central High School Cafeteria  
Edison High School Cafeteria  
Edison Middle School Cafeteria  
Emerson Elementary School Cafeteria  
Expo Square Food & Beverage  
Fadler Company, Inc.  
Farm Fresh Direct  
Fitzgerald Catering  
Frito-Lay Inc.

Frontier Produce  
Gourmet On the Go  
Griffin Food Company  
Gutierrez Brothers Banana House  
Hale High School Cafeteria  
Hamilton Middle School Cafeteria  
Hebert's Specialty Meats  
Hideaway Pizza  
Jasper Products  
J-M Farms  
Joe Momma's Southtown Pizza  
Juice Bowl  
K. C. Fruit Inc.  
Kendall-Whittier Elementary School Cafeteria  
Kraft Foods, Inc.  
Kum & Go  
La Donna's Fancy Foods  
Lance, Inc.  
Lean Gourmet  
Livesay Orchards  
Longhorn Steakhouse  
Ludger's Catering Restaurant  
Master Foods  
McKee Foods Corporation  
Memorial Baptist Church  
Memorial High School Cafeteria

Mrs Baird's Bakery Outlet  
National Steak & Poultry  
Nonni's Food Company  
The Olive Garden  
OSU Horticulture & Landscape Dept.  
P. F. Chang's China Bistro  
Panera Bread  
Patrick Henry Elementary School Cafeteria  
Pepsi-Cola Bottling Group  
Pizza Hut  
QuikTrip Kitchens  
Randy's Foods  
Reasor's  
Red Lobster Restaurant  
Rogers High School Cafeteria  
St. Francis Hospital Cafeteria  
Sam's Club Membership Warehouse  
Sara Lee Food & Beverage  
Sunny Delight Beverage Co.  
Sweet Tooth Candy & Gift Company  
The Sygma Network  
Target  
United Warehouse  
Walmart  
Warehouse Market Distribution Center  
Whole Foods Market  
Williams Produce

# Financial Contributors

We are very grateful to all these supporters who donated money this fiscal year.

## \$25,000 and above

Grace & Franklin Bernsen Foundation  
H. A. & Mary K. Chapman Foundation  
Hardesty Family Foundation  
Walt and Peggy Helmerich  
George Kaiser Family Foundation  
Herman Kaiser Foundation  
J. R. Albert Charitable Foundation  
MAZON:A Jewish Response to Hunger  
MetLife Foundation  
The Charles and Lynn Schusterman Family Fo.  
Lynn Schusterman  
Tulsa Community Foundation  
The Anne and Henry Zarrow Foundation

## \$24,999 - 10,000

A. G. Equipment Co.  
Atkinson Family Foundation, Inc.  
Bama Foods Limited Partnership  
James and Kristin Bender  
Congregation B'nai Emunah  
Feeding America  
FW Murphy  
The Grainger Foundation  
The Hille Foundation  
Hilti, Inc.  
Yvonne Hovell  
Kahan and Associates  
Philip and Miranda Kaiser  
Jenkin and Ana Maria Lloyd Jones  
Victor and Cynthia Mitchell  
Michael and Leslie Moore  
Mike and Leslie Moore Charitable Fund  
William Nations  
Osteopathic Founders Foundation  
Pediatric HealthCare Fund  
George and Bonnie Taubel  
Thrill Hill Productions, Inc.  
Waters Charitable Foundation  
The Williams Co. Foundation  
Richard and Karen Wilson  
Wireless Technologies, Inc.  
John Steele Zink Foundation

## \$9,999 - 5,000

Adams Hall Investment Management LLC  
AT&T Oklahoma  
Charles Bendana  
Borden Meadow Gold Dairy  
Sanford and Irene Burnstein  
Margaret Douglass  
Frank Family Foundation  
Frantic, INC.  
FW Murphy Family Foundation  
Hagler Pinkerton Foundation  
Mary Ann Hille  
Magellan Midstream Partners  
Bruce and Brenda Magoon  
Ralph & Francis McGill Foundation  
Scott and Sharon McGinness  
Mesa Products  
Don and Donna Millican  
Omni Air International  
The Oxley Foundation  
Barry Redlinger  
Sol Robinowitz Foundation  
Paul and Helga Rose  
Patricia Savage  
Bruce Springsteen Concert  
Larry and Julie Tarwater  
The Charles and Marion Weber Foundation  
The Williams Companies, INC  
Glenann Wilkerson  
The Zarrow Families Foundation

## \$4,999 - 1,000

Mona Ables  
ACBL Charity Foundation  
James and Laura Addison  
Admiral Tag Agency Employees  
AKIN'S Natural Foods Market  
Matt and Cynthia Albright  
All Souls Unitarian Church  
Allied Bearings Supply Co.  
American Crating Company  
Joe and Leslie Anderson  
Apache Corporation  
Arlan Receiving, Delivery and Storage INC.  
James and Sara Bailey  
Bank of Oklahoma, N.A.  
Ann Bartoloni  
John Bates  
Edward Beaumont  
Vera Berlin  
Steven and Debbie Berlin  
Bob and Jane Berryhill  
James and Suzette Birch  
Donald and Helen Bischoff  
Bodean Seafood Restaurant  
Patricia Murguia Bohannon  
Francie Bomer  
Briley Construction  
Duane and Sue Brothers  
Steven and Carol Burgess  
Dennis and Lisa Cameron  
John and Molly Campbell  
Campbell-Lepley/Hunt Foundation Inc.  
Carmax  
Mike and Patsy Case  
Phil and Annamari Childers  
Clinical Perfusio Systems, Inc.  
Bryan Close  
Mark Close  
Richard and S. Jane Cooper  
Bill and Lisa Copeland  
Copy-Scan & More, LLC  
Cox Communications, INC  
Cuesta Foundation  
Patrick and Janet Curth  
Cyclonic Valve Company, Inc.  
Charles and Rebecca Dees  
Denali Inc.  
Dish Network  
Robert Doenges  
Craig Dolinsky  
Dollar Thrifty Automotive Group  
Tammy Duckwall  
Stephen and Ruthie Duenner  
David and Donna Dutton  
Margaret Ellison

William and Marion Elson  
Peggye Enlow  
Executive Women International  
Fabricut, Inc.  
Farmers Insurance Group  
Richard and Nancy Ficken  
First Presbyterian Church Tulsa  
First Presbyterian Church, Westminster Class  
First United Methodist Church Tulsa  
Michael and Lee Ann Fiser  
Michael and Sherri Flaherty  
Joan Flint  
Ed Fogle  
Food Pyramid  
Forest Park Christian Church  
Doug Fox  
Brandon Michael Fraire Memorial Fund  
Francis Oil & Gas, INC.  
Jeff Glass  
Glazer's Oklahoma  
Global Power Equipment Group Inc.  
Don and Margaret Gordon  
Diana Gotwals  
Grace Lutheran Church  
D. Joseph and Ellen Graham  
John and Sarah Graves  
Michael and Bette Graves  
Karen Gray  
John and Allison Greene  
Mike and Teri Griffin  
Michael Guterman  
David and Lynn Hall  
Dores Hatfield  
Health Food Associates, Inc.  
Charles and Gretchen Heinberg  
wDavid and Marcy Hency  
Steve and Cathy Herrin  
Gerhard and Diane Hill  
Linda Hogan  
Gordan and Florence Holland  
Holy Trinity Greek Orthodox Church  
Jack Hood

Steve Hoppes and Linda Bell  
 David and Gina Hoyda  
 Craig and LuAnn Hughes  
 David and Vicki Hurewitz  
 Chris and Rebecca Hutton  
 Nancy Isbell  
 Marvin and Ruth Jaffe  
 Jarboe Sales  
 Bill and Susan Johnston  
 W. Douglas and Carolyn Jones  
 Joshi Technologies International  
 Kach Family Charitable Fund  
 Joel and Charlotte Kantor  
 Howard and Pat Kinder  
 Hayden and Heidi Kiser  
 Elizabeth Kopple  
 Mary Korhase  
 Terry and Jane Krout  
 Leadership Tulsa, Inc.  
 G. Scott and Janis Lewis  
 Greg W. Lewis  
 Jan Macormic  
 Macy's Foundation  
 James and Shari Maddux  
 Lois Mahan  
 Chip and Sharon McElroy  
 McElroy Manufacturing  
 McFarland Davies Architects  
 James and Marian McUsic  
 Brent and Larena Meadows  
 Mesa Products Employees  
 Sanjay and Julie Meshri  
 John and Katherine Michalk  
 Mary Fowler Miller  
 J. Steve Miller  
 Dana and J. Randall Mills  
 Steven and Karen Mitchell  
 Joseph Mitchell  
 Megan Mooney  
 Joseph F. Mueller  
 Ruth Nelson  
 Shery Nelson  
 Jeremy Nickel  
 Mary Obrien  
 Oklahoma Health Academy  
 Greg Oliphant  
 Optimus Industries/Chanute Manu. Co.  
 Mike and Karen Orman  
 Doug and Deborah Padgett  
 The Pampered Chef  
 Panera Bread  
 Pendergraph  
 Emmitt Pearcy  
 Harold and Carla Pohl  
 Richard and E. Elaine Post  
 Richard and Annette Pringle  
 Bruce Z. & Phyllis J. Raines Family Foundation  
 Ram Energy, Inc.  
 Regent Bank  
 Riverfield School  
 David and Debbie Roberts  
 M.E. Robinson  
 St. John's Episcopal Church  
 Jay Sallinger  
 Mary Schaub  
 George Schmetzer and Mary Lhevine  
 Ralph and Mary Schrader  
 Joseph Schulte  
 Shaw Pipeline Services  
 Clifford and Sandra Shea  
 Gene Silvis  
 Rhea Simmons  
 Richard and Norma Small  
 Sodexo Foundation, Inc.  
 Steven Spencer  
 State Farm Mutual Automobile Insurance Co.  
 Thomas and Sue Stees  
 Donald and Debra Stephens  
 Cindy Stevens  
 Mark Storey  
 Mr. and Mrs. Strange  
 Jim and Leslie Stubbs  
 J. C. Stump, II  
 Summit Bank  
 Sunrise Tulsa Rotary Foundation, Inc  
 T.D. Williamson, INC  
 Carol Tandy  
 David and Peggy Tanner  
 Jeanette Tate-Sullivan  
 Robert and Deloris Taylor  
 William Thompson  
 Todd Family Charitable Foundation  
 David and Jane Trumbo

Mary Tubbs  
 Arthur and Carole Tucker  
 Tulsa Daily Grill  
 Tulsa Disc Sports Association  
 UBS Financial Services Volunteer Group  
 Ken Ray Underwood Attorney-At-Law  
 University Of Tulsa Athletics  
 Sam Vierson Family Foundation, Inc.  
 William Vogle  
 Sara J. Waggoner  
 Ted and Christie Williams  
 T. D. and Carol Williamson  
 Steven and Debra Wilson  
 John and Mary Wofford  
 James and Belle Wright  
 David and Jean Yaeger  
 Gail Young  
 Richard and Linda Young  
 Young Presidents Organization/Tulsa  
 Chapter  
 Maxine & Jack Zarrow Foundation  
 Steven and Ann Zenthoefner

**\$999 – 500**

Johna Abbott  
 Jack and Janice Alexander  
 American Airlines  
 American Airlines Triad Qwl  
 Alan and Mary Anderson  
 ARINC Incorporated  
 Avalon Steak House  
 Joseph and Julia Back  
 Robert and Annette Baker  
 Clyde and Geraldine Barnes  
 Kenneth and Carol Bebak  
 Jay and Rita Bedford  
 Gary and Marianne Benjamin  
 Edwin and Linda Berger  
 Best Cleaning Service Company  
 BIGA, LLC  
 Robert and Fran Biolchini  
 Larry and Terry Biffing  
 Melanie Black  
 Ann Blakely and Robert Katz  
 Erik and Jessica Block  
 Kevin and Kim Bonifield  
 Sandra Boyaci  
 Barth Bracken  
 Belinda Brazear  
 The Brasserie  
 Brickhugger Restaurants, LLC  
 Elma Briggs  
 Forrest and Jody Brokaw  
 William and Carol Brumbaugh  
 Denny and Mary Byrne  
 C9 Productions, Inc.  
 Mark and Janet Capehart  
 Jo Ella Carson  
 Noreen Casey and Tally Ferguson  
 Richard and Joyce Chillingworth  
 Ann Coatney  
 Cobblestone Homes, Inc.  
 Timothy and Marsha Cowan  
 Carol Croskey  
 Cynthia Cummins  
 Data Exchange, Inc.  
 Thomas and Catherine Davenport  
 Lynn Davis  
 Delta Theta Chi Sorority  
 Galen and Lucinda Denning  
 Vincent Dembach  
 Roger and Karen Des Prez  
 Jeannie Dickerson  
 Robert and Sally Donaldson  
 Jean Duben  
 Otto and Ellen Duecker  
 Al and Anna Dupus  
 EagleEye Royalty Management Co.  
 James and Carolyn Edwards  
 Dale and Louise Ellis  
 James and Joan Ellison  
 Family & Children Services  
 William and Donna Fariior  
 Fellowship Lutheran Church  
 First United Methodist Church McAlester  
 Rachel Fisher  
 Patricia Flanagan  
 Flemmings's Prime Steakhouse & Wine Bar  
 Flynn Law Firm  
 Carol Foley  
 Ronald and Susan Foshee  
 Julie Frank  
 Steven and Carol Gaede

Albert and Susie Gallegos  
 Randy and Judy Gann  
 Mildred Garton  
 Wendell and Francine Gates  
 Tony and Shawna Gehres  
 John and Kristie Gibson  
 Penni Graham  
 Scott and Anne Graham  
 Richard and Susan Grapengater  
 Alta Gray  
 Douglas and Susan Gronberg  
 Jan Grubbs  
 John and Lissa Hair  
 Richard and Judy Hall  
 Eugene and Susan Harris  
 Kenneth and Joye Harwell  
 David and Joye Ann Hawkins  
 H. M. and Mrs. Hawkins  
 Charles and Lily Helm  
 Donna Henry  
 Rudolf and Deborah Herrmann  
 Eric and Belinda Hinkfeint  
 R. E. Hoobler  
 Raymond Hunt  
 Randy and Anna Hunt  
 Kirk and Mary Hurst  
 Dorothy Hurter  
 Hoyt and Mary Hyden  
 Larry and Judith Jackson  
 Marie James  
 Brett and Annette Johnson  
 Kelley Ranch Company  
 Alexander Kern and Rachel Thompson  
 Donald and Judith Kihle  
 Joe and Beverly King  
 Kenneth and Melyssa Kinnear  
 Kevin and Julia Klammer  
 Michael Knapp  
 George Kravis  
 Dobie and Sandra Langenkamp  
 Sonja Langlee  
 David and Leslie Lawson  
 Leadership Properties  
 Billy and Donna Leonard  
 Charles Lewallen  
 The Lewis Foundation  
 Susan Loomis  
 Gertrude Lovoi  
 Jane I. Lyles  
 Steven Mackey  
 Cameron and Marcia MacLeod  
 Philip Marshall  
 Gene and Diane Martin  
 Doris Mayfield  
 Richard and Carole McCormick  
 Mark and Connie McFarland  
 The Melting Pot  
 Helen Merritt  
 Mid Life Crisis Band LLC  
 Mid-South LLC  
 Midtown Cafe Corp.  
 Raymond and Christine Miller  
 Dana Mitchell  
 Larry and Sandy Mocha  
 Delbert and Sandra Moore  
 Alan and Christina Morrow  
 James and Kathy Mosteller  
 Otto and Nancy Mullman  
 Russell Nelson  
 Rita Newman  
 Taphrina Nicka  
 Lester and Evelyn Nienhuis  
 Andrew and Daleen Nimick  
 Kenneth Nolte  
 Northeast OK CPCU Society  
 Okay United Methodist Church  
 Oklahoma Cattlewomen, INC.  
 Oliver's Twist Brooksife Grille  
 Roger and Loretta Overholt  
 Palace Cafe  
 Bob Parker  
 Thomas Pendergraft and Debra Shan  
 Goshorn  
 Troy Petit  
 Petrohawk Energy Corp.  
 Richard Phillips  
 Bob and Jodi Pielsticker  
 The Pierce Family Foundation  
 The Polo Grill  
 Jay Porterfield  
 Ronald and Mary Ray  
 Jason Reed  
 Anne Register

Rehabilitation Association of  
 Muskogee, PC  
 William and Katherine Reid  
 Renaissance Tulsa Hotel and  
 Convention Center/Cypress Grill  
 Kenneth Renberg  
 William Reynolds  
 Pearl Rhoads  
 Ted Riseling  
 George and A.M. Roffers  
 Susan Rorschach  
 Tom and Annaruth Schick  
 Jonathan and Michelle Schnitker  
 School of St. Mary's  
 Melanie Seaman  
 James and Elaine Shirley  
 Kenneth and Patricia Simmons  
 James and Carole Sloan  
 Smith Family Trust  
 Delialee Snider  
 Sonoma Bistro & Wine Bar  
 Jimmy and Donna Southern  
 Robert Soza and Jana Shoulders  
 Spruce Up Lawn & Landscape Inc.  
 Gerald and Patricia Stamper  
 Carl and Jacqueline Stanley  
 Paul Stanley  
 Carley Stebbins  
 Paul and Nancy Stevenson  
 Margaret Stewart  
 John and Barbara Strong  
 Donna Swank  
 Eric Swank  
 Verona Swank  
 Neal and Karen Talley  
 Joe and Priscilla Tate  
 Kemper and Heather Taubel  
 Charles M. Taylor  
 TCC Northeast Campus/Upward Bound  
 Temple Israel  
 Anne Terrell  
 P. G. Thambuswamy and Annie  
 Venugopal  
 Thomson  
 Jerry Thorman  
 David and Maurine Thornton  
 Tim and Nancy Thuston  
 Janice Toomey  
 F. Wade and Sheila Uhrich  
 John and Rosemary Vaught  
 James and Debera Wakefield  
 Wal-Mart Pound for Pound  
 Bradley and Catherine Welsh  
 Maryjo Wheeler  
 Margaret White  
 Theresa Whiteside  
 Jerry and Betty Wilburg  
 Sam and Ann Williams  
 Robert and Margaret Willson  
 Catherine Wilson  
 Doug and Lael Wojcik  
 Di Wong  
 Glenn and Veroqua Yaffe  
 Ellen Zanetakis  
 Jack and Maxine Zarrow  
 Rick and Sherry Zinda  
 Debra Zinke

**\$499 - 100**  
 A-1 Electric Service  
 A-Max Signs Co Inc.  
 Janie Abbott  
 Ron Abbott  
 Barry and Jackie Abels  
 Kimm Abercrombie  
 Sylvia Abercrombie  
 Dolores Abraham  
 David and Charlotte Abrams  
 Eve Abrams  
 Ace Sound, INC.  
 Joe Acox  
 Troy and Hazel Adams  
 Ann Holiday Adcock  
 Bobbie Adcock  
 Bruce Adkins  
 Lee Adler  
 The Aidatrix Foundation  
 Audrey Alcorn  
 Lynn Alexander  
 Norman and Charlotte Alexandre  
 Dorian Allen  
 Fred and Margaret Allen  
 George and Edna Allen

Jeffrey and Julia Allen  
 Judith Allen  
 Lee and Beverly Allen  
 Shirley Ann Allen  
 William and Doris Allen  
 Allied Insurance Associates Agency, Inc.  
 Lemuel and Sharon Allred  
 Alpha Kappa Alpha Sorority  
 Charles Alred  
 Jeanette Altman  
 Ronny Altman  
 American Business Women's Association Oil  
 Capital Chapter  
 Roger and Suzanne Ames  
 Mohammad and Rajeanna Amini  
 Amirs Persian Imports  
 Alan and Glenna Anderson  
 Bruce and Anna Anderson  
 Elise Anderson  
 Naomi Anderson  
 Robert and Jean Anthis  
 Tricia Arend  
 Jeri Armstrong  
 Asbury United Methodist Church  
 Micheal and Melissa Atkinson  
 Robert and Rita Augsburgberger  
 Alex and Virginia Austin  
 Robert and Barbara Avakian  
 Sam and Lou Ann Avant  
 Allan and Estelle Avery  
 Kathi Baab  
 Monica Bagwell  
 Byron Bailey  
 Doyle and Rhonda Bailey  
 Garrick and Roberta Bailey  
 Lyle and Opal Bailey  
 George and Vicki Baird  
 Valerie Baird-Brown  
 Barry Baker  
 Basil and Ganda Baker  
 Jeff and Cheryl Baker  
 Judy Baker  
 Leo and Christine Baker  
 Douglas and Virginia Baldrige  
 Terry Baldwin  
 V. F. and S. F. Bales  
 F. W. and Sonja Banfield  
 Andy Bantily  
 D. Baptist-Niles  
 Perry and Nell Barnard  
 Elaine Barnes  
 James and Becky Barnes  
 Bob and Kay Barnett  
 Vincent and Lee Anne Barranco  
 Nina Barrett  
 Renea Bartholomeo  
 Bernard and Ruby Bartlett  
 Barton Companies  
 Beverly Barton  
 Bruce and Nancy Barton  
 Garry and Joyce Baskin  
 Trenton and Ewell Bass  
 Ray and Janada Batchelor  
 Faith Bates  
 George and Eva Battoe  
 Gerald Bauer  
 Jon and Carol Baughman  
 Beacon Building of Tulsa, LLC  
 Bradley Beall  
 Linda Bean  
 James and Mary Bearden  
 Edward Beattie  
 James and Sharon Beavers  
 Thomas and Priscilla Been  
 Maryann Beene  
 Margaret Beesley  
 Cecil and Norma Beeson  
 Garold and Kathleen Beisly  
 D. and Caroline Benediktson  
 Benevolent Protective Order (Elks) Tulsa Lodge  
 No. 946, INC.  
 Benjamin and Jodie Benner  
 Jeff and Carol Bennett  
 Anthony and Nancy Benway  
 Leonard and Susan Berbee  
 David and Anna Beroll  
 Bob Berry  
 Gerard and April Beshara  
 Bethany Christian Church  
 James and Linda Bethel  
 Donna Betow  
 Roger and Susan Bey  
 BHC Pipe & Equipment Co.

Marcel Binstock  
 Ina Bittle  
 David and Marsha Blackburn  
 Donald and Barbara Blackburn  
 Della Blankinship  
 David Blatt  
 Catherine Blizard  
 R.W. and Sharon Block  
 Mark and Dori Blohm  
 Harvey and Sandra Blumenthal  
 Albert and LaNae Boatright  
 Ronald and Dolores Boden  
 Tim Boeckman  
 Richard and Robin Bonaventura  
 Barbara Bonner  
 Valerie Bonney  
 John and Sheryl Boone  
 Zella Borg  
 Herbert and Elva Bossaller  
 Daniel and M.Faith Boudreau  
 Bounce U  
 Marian Bovaird  
 Stephen and Sharna Bovasso  
 Donald and Linda Bowen  
 Jayne Bowen  
 Linda Bowen  
 Mary Nell Bowman  
 Pat Bowman  
 BP Matching Fund Programs  
 Richard Brackett  
 Paul and Leslie Braden  
 Charles and Betty Bradley  
 Michael and Susan Bradley  
 Steven Braselton  
 Sylvia Braverman  
 Richard and Ellen Bregman  
 N. Colleen Brennenman  
 Mary Brett  
 Leroy Brewer  
 BRG Petroleum Employees  
 Kathi Bridges  
 Matthew Bridwell  
 Jason Brimer and Mary Cantrell  
 Robert Brinlee  
 James and Linda Brodie  
 Broken Arrow Woodworks  
 Earl and Roseann Brookbank  
 Kimberly Brooke  
 Lucile Brower  
 Andrew and Megan Brown  
 Carl and Winifred Brown  
 Danny and Dianna Brown  
 Frances Brown  
 Lana Brown  
 Lynda Brownson  
 Myrna Brown  
 Paul and Sheila Brunton  
 Robert Bruton  
 Cindy Bryan  
 Paul and Kim Bryden  
 Thomas and Julie Buckley  
 Joseph and Renae Bufogle  
 Aydin Bulak  
 Kathleen Burchette  
 Robert and M.S. Burchfield  
 Virginia Burdine  
 Richard and Dorothy Burgess  
 Grace Burke  
 Fred Burki and Myrna Kramer  
 Charles Burleson  
 Janice Burnett  
 William and Carol Burnett  
 Mary Burns  
 Bill and Janie Burt  
 H. Leon Harvey and Jennifer Burton  
 Albert and Marilyn Bush  
 Mildred and Thomas Buxton  
 Steve Byrd  
 Cynthia Cain  
 Karen Callahan  
 Robert and Linda Calvert  
 Pam Cameron  
 Chris and Katie Campbell  
 Doug Campbell  
 Jack and Barbara Campbell  
 Jim Campbell  
 Randy Campbell  
 William and Mary Campbell  
 Martha Cantrell  
 Phil Capehart  
 Mark and C. Rene Capron  
 Russell Carlton  
 Jerry Carman

Dawn Carter  
 Stephen Carvell  
 Sharon Case  
 Evelyn Casey  
 Kenneth and Aida Cass  
 Michael and Constance Cassity  
 Minnie and Gary Casteel  
 Nancy Catron  
 Christina Causey  
 The Chalkboard  
 Holly Chandler  
 Iris Chandler  
 Mr. and Mrs. C.C. Chapman  
 Eugene and Barbara Ann Chapman  
 William Chapman  
 Jeffrey and Jaime Chasen  
 Charles and Mary Chastain  
 Cheryl Cheadle  
 Betty Chenauff  
 Peter and Rosalie Childs  
 Sharron Chinn  
 Chinowth & Cohen Realtors - Family Fund  
 Lawrence and Nancy Chisum  
 Charles Chittom  
 Noi Choughale  
 Carolyn Christman  
 Church of the Madelene  
 Cimarex  
 City of Tulsa Communications Dept.  
 Bonney Rae Clark  
 Ross and Linda Clark  
 William and Gay Clarkson  
 William and Beth Clary  
 John and Leah Clayman  
 Phyllis Clement  
 Maurice Clyma  
 Lynn and Kaye Coats  
 Joseph and Patricia Cobb  
 Coca-Cola Enterprises, Inc.  
 Karl Cocke  
 Carol Coker  
 Lee Ann Cole  
 Helen Collier  
 Beverly Collin  
 Elizabeth Collins  
 Margaret Collins  
 Community Christian Church  
 Deleise Conner  
 Richard Coones  
 Florence Cooper  
 Scott Cooper  
 David Cordell  
 Ben Cornett  
 S. Corwin  
 James and Alice Costas  
 Betty Cottier  
 Jere and Doris Cottle  
 Terry Cotton  
 Shirley Courtney  
 Jeff and Michele Cowen  
 Hazel Cowles  
 Glenn and Veronica Cox  
 Jack and Diana Jean Cox  
 Jeffrey and Cristy Cox  
 Sally Cox  
 Virgil and Mildred Cox  
 Wanza Cox  
 Crafton Tull Sparks and Associates  
 Stephen Cranford and Myrna Jones  
 Lucille Crawford  
 Stanley and Julia Crawford  
 Timothy and Flinn Cremin  
 Susan Crenshaw  
 Deborah Crissup  
 Cindy Croft  
 Larry and Margie Crow  
 Daniel Cruickshank  
 Carolyn Crump  
 Michele Cunliffe  
 M. F. Cunningham  
 Mike Curtis  
 Lea Ann Curtiss  
 Betsy Cutchin  
 D.G.P.  
 Janice Dahl  
 Karen Dale  
 Candiance Dalesandro  
 Daniel and Valerie Dandridge  
 Denise Daniel  
 Joyce Daniel  
 DAR -Tulsa Chapter  
 George and Tracy Davenport  
 Robert and Janis David

Donald L. Davidson  
 Gerald and Johnetta Davis  
 James Davis  
 John and Glenda Davis  
 T.W. and Grace Davis  
 DCP Midstream Matching Gifts  
 Program  
 Joe and Linda Deavours  
 Edward Decker and Terese Hall  
 Steven and Latrenda Deem  
 Jerry and Nola Deffenbaugh  
 Joe Degen  
 Charles and Lisbeth Delong  
 Harold and Martha DeMoss  
 Ivy Dempsey  
 Joseph Dempsey  
 Kenneth Denney  
 Coby and Deborah Denton  
 Nirupama and Duminda DeSilva  
 Dale and Cathryn DeSpain  
 Alfred Destefano  
 John and Katherine Dewey  
 Sam and Phyllis Dickerson  
 Joyce Dickinson  
 J. Scott and Martha Dickman  
 James Dillinger  
 Norma Dimmick  
 Ludwig and Sally Ann Dischner  
 Allison Disney  
 Chris and Joanna Dixon  
 Richard Dixon  
 William and Rose Dixon  
 Dan and Mary Dodson  
 William and Linda Doenges  
 Barbara Doolittle  
 Diane Doornbos  
 Paul Dorris  
 Domer Dougherty  
 Alan Doughty  
 Andrew Doust  
 Patrick and Lynn Douthitt  
 Dian Dowell  
 Charles and Marian Dresser  
 F. Ford Drummond  
 Janet Drummond  
 Ronald Duca  
 Marilyn Duck  
 James Duff and Patricia L. Kerkstra  
 Stanley Dugger  
 Charles and Pamela Duke  
 J.L. and Emily Dunagin  
 Norman Dunitz  
 Jake and Vicki Dunkel  
 Jan Dunkelberg  
 Myron and Anne Dunton  
 Donald and Mary Dustman  
 Denise Dutton  
 Tiffany Dutton  
 Shirley Dyer  
 Paul Dykes  
 Paul and Catherine Eastaway  
 Patricia Eaton  
 Randall and Paula Eggert  
 Ruth Eichenberger  
 Dale R. or H. Louise Ellis Family Trust  
 Harry and Mary Elsberry  
 Sandra Emberson  
 Alma Emerson  
 Larry and Linda Emerson  
 Tom and Cara Emerson  
 Jerry and Joanne Emmons  
 Dennis England and Kim Doner  
 Jessie Ann Engle  
 Erik and Rachel Enyart  
 Epsilon Sigma Alpha/Beta Gamma  
 Chapter  
 David and Helen Epstein  
 Helen Ereiser  
 Howard Ervin and Deborah Bernier  
 William and Sharon Ervin  
 Scott and Isabell Estes  
 William and Gloria Estlin  
 Dan and Patricia Evatt  
 Daniel and Deborah Eyer  
 Faith Family Clinic, PC  
 Faith United Methodist Church  
 Ruby Farish  
 F. Sinclair Farmer  
 Pamela and Robert Farris  
 Feen Foundation  
 Feinstein Foundation  
 Herman Feldman  
 Toby Fell

Fell Oil and Gas, L.L.P.  
 Alina Fennell  
 Michael and Terry Fenner  
 Susan Fenster  
 Ronald and Lindsay Fick  
 Bill and Linda Fiddler  
 Fifty Five Degrees  
 First Baptist Church Tulsa  
 First Christian Church Claremore  
 First Church of the Nazarene  
 First Data Foundation  
 Martin and Elizabeth Fiscus  
 Connie and Barbara Fisher  
 Norman Fisher  
 Phyllis and David Fist  
 John and Susan Fitter  
 Ricky Fizer  
 Edward Flaxbart  
 Edward and Alma Fleske  
 Ron and Tuesdye Fletcher  
 Lynn Flinn  
 Flint Construction Company  
 Flintco  
 Frank Flusche  
 Carol Foor  
 Susan Forman  
 Forty-First Street Christian Church  
 Quilters  
 Fox Cleaners, Inc.  
 Patricia Fox  
 Ronald and Janet Francisco  
 Elizabeth Ann Franklin  
 Lori Franklin  
 Rhonda Freiner  
 Phil Frohlich  
 O. Susan Frusher  
 Robert Fugate  
 Curtis and Chloe Fuller  
 Kevin Gabel  
 Rolf and Leslie Gainer  
 Joseph Gallagher  
 Chelsea Gallery  
 Catherine Gammie  
 Steven and Debby Ganzkow  
 Michael and Andrea Garner  
 Cynthia Garrett  
 Susan Gaston  
 Loretta Gates  
 Barbara Geary  
 William and Barbara Geffen  
 Deborah George Elaine Green  
 Richard and Vicky George  
 J. Gifford, Inc.  
 Roger and Tonya Gilbert  
 Donald and Madeline Gilbreth  
 Paul and Kathryn Gilling  
 Neil and Belinda Gilpin  
 Mr. and Mrs. Ginn  
 Paul and Bonnie Glavas  
 John and Vivian Gleese  
 Dean Glover  
 Awilda Godsey  
 Golden Eagle  
 Harold and Shirley Goldman  
 Rodger and Jennifer Goldman  
 Good Shepherd Hospice  
 Maxine G. Goodlin and Malcolm R.  
 Newton  
 R. Shirley Goodman  
 Jeanette Gorrell  
 Thomas and Evelyn Gosnell  
 Kenneth Gowriluk and Joann Huber  
 Robert and Deborah Grabb  
 Jana Grafiug  
 James and Sue Graham  
 John and Eleanore Graham  
 Doug and Sandy Graue  
 Gregory Gray  
 Clarence and Hettie Green  
 D. Eric and Elizabeth Green  
 Doris Green  
 Frank and Sharon Green  
 Patricia Green  
 Robert and Glenna Jean Green  
 Jo Greenquist  
 David and Jennifer Greenwell  
 Kenneth and Marian Greenwood  
 Christopher Greer  
 Myrna Gregg  
 Randy and Shelley Grellner  
 Douglas Grenier  
 Jerry and Liane Griffith  
 Carma Grigsby

Tim Grogan  
 Barbara Groggs  
 Paul and Helga Grundmann  
 Janet Gulbis  
 Mary Ellen Gunby  
 David and Jeannie Guthery  
 Shirley Guthrie  
 Kent and Elizabeth Hackett  
 James and Alma Hager  
 Robert and Theresa Hakan  
 Kathrine Hakim  
 Cynthia Hale  
 Evert Hall  
 R. Vance and Marilyn Hall  
 Jimmy and Sheila Hambrick  
 Wayne Hamilton  
 Susan Hammond  
 Stanley F. Handel  
 Ricky Haney  
 William Hanks  
 David Hansen  
 H. E. and H. B. Hanson  
 Teresa and Mark Hardesty  
 Lonnie and Donna Hardin  
 Mary Hargrove  
 Jonathan Haring  
 Robert and Carolyn Haring  
 John and Judy Harmon  
 Larry S. Harral  
 Ellen Harris  
 Marjorie Harris  
 Martha Harris  
 Rhonda Harris  
 Willis and Mary Harris  
 Charles and Ellen Hartman  
 Paul and Velma Hartog  
 William Haselwood  
 Bill and Vickie Hatley  
 Edward and Pamela Hawkins  
 Frank and M. Jane Hawkins  
 Howard and Judith Hawkins  
 Janette Hawkins  
 Robert and Janet Hawks  
 J. Kevin and Janet Hayes  
 Jim Hayes  
 Nancy Hayes  
 Dorothy Hays  
 Edna Hays  
 Elizabeth Hays  
 James and Gretchen Heatherington  
 Leo and Vada Heidorn  
 Cheryl Heisten  
 Fayenelle Helm  
 John and Gudrun Hendrickson  
 Angela Henry  
 Donna Henson  
 Max and Zelda Herman  
 Donald and Mary Louise Herrold  
 Terry and Linda Hester  
 Donald Higgins  
 Edward and Patricia Higgins  
 Jackie Hill  
 Josephine Hill  
 Richard and Kay Hill  
 Robert Hill  
 Nancy Hinch  
 Roberta Hinkley  
 Darline Hobcock  
 David Hogan  
 Jean Hokit  
 Phil and Dixie Holeman  
 William and Karen Holford  
 Steven and Susan Holley  
 Henry and Joyce Honas  
 Barbara Hood  
 Robert Hooper  
 Hope Unitarian Church  
 Jerry and Carol Horacek  
 John and Ida Horeth  
 Allen and Ronni Horn  
 Bill and Jerelyn Horne  
 Steven and Linda Horstman  
 Dawn Hoskey  
 Craig and Beverly Hoster  
 Holly Hubbs  
 Keith and Glenda Huckabay  
 Dow and Deanne Hughes  
 Judy Hughes  
 Robert and Nathalie Hughes  
 Roy and Lois Hughes  
 Jan and Martha Hulsebos  
 Judy Hulsey  
 Maxine Hunter

Billy Hurst  
 Bonnie Hurst  
 Faye Hutcherson  
 Kay Hutchinson  
 Vanessa Hutto  
 Martin Hynes  
 Doug and Pamela Ibbetson  
 Monique Idoux  
 Charles and Suzanne Iliff  
 Rene Imark  
 John and Toni Imbler  
 Terry and Lillian Imhoff  
 Angel Ingley  
 James and Geraldine Ingram  
 Brett and Susan Jackson  
 Mary Jackson  
 Jeanne Jacobs  
 Victor and Irene James  
 Erwin and Maurine Janssen  
 Ann Jarrett  
 Carol Jarrett John and G. Ann Jarrett  
 Jeffrey and Adriane Jaynes  
 Ronald and Myra Jeffris  
 David and Barbara Jenkins  
 Jane Jenkins  
 Mae Evelyn Jenkins  
 Paulette Jenkins  
 Kathryn Jennings  
 Jewish Federation of Tulsa Foundation  
 Hong Jin  
 Ann Johnson  
 Ann Johnson  
 John and Katherine Johnson  
 Larry and Ann Johnson  
 Michael and Amanda Johnston  
 Brady and Rosalie Jones  
 Craig and Patty Jones  
 David Jones  
 Gary Jones and Elaine Moore Jones  
 Mary Ellen Jones  
 Nina Jones  
 Roger and Nikki Jones  
 Roy and Evelyn Jones  
 Nancy Jose-Cecil  
 Jon and Debra Jurek  
 Stephen and Anita Kabrick  
 Kaiser-Francis Oil Company  
 Laurel Kane  
 Judy Kantor  
 Edward and Rose Marie Kaplan  
 Robert and Joan Kaplan  
 Kathleen Kastelic  
 Martin Keating  
 Linda Keely  
 Karen Keith  
 Keith and Gail Kelly  
 Michael and Juletta Kelly  
 Royce and Julie Kelly  
 Marwin Kemp

Kendall Whittier, INC  
 Hall and Margaret Ketchum  
 Key Marketing Group  
 Cheryl Key  
 David and Betty Key  
 KGK Tile, Inc  
 Dana Khan  
 Janie Kidd  
 Cheryl Kilpatrick  
 Kimberly-Clark Corporation  
 D. Michael and Karen King  
 Donald King  
 James and Elizabeth King  
 Kimberly King  
 Chester and Barbara Kirk  
 Marshall and Audrey Kittelson  
 KJRH Channel 2 Viewers  
 Shirley Ruth Klar  
 David and Helen Klein  
 Nancy Klocko  
 Robert Klunder and Connie Swan  
 J.D. Knecht  
 Paulette and Richard Knepper  
 Joyce Knigge  
 Alfred Knight  
 James Knipe  
 P. Kouremenos  
 Craig and Carol Kovin  
 Krell Commercial Construction, Inc.  
 Peggy Krisa  
 Molly Krumme  
 E. Jerry Kucera  
 Martha Kuzlik  
 La Donna's Fancy Foods Inc.  
 Richard Laden  
 Howard and Carolyn Laidley  
 Nelda Lamb  
 Steven and Denise Landgarten  
 Sharyl Landis  
 Claudia Landrum  
 James and Wendy Lane  
 Rebecca Langenkamp  
 Kelly Langerak  
 Joyce Lantz  
 Faylin Lasalle  
 Jerry and Michele Lasker  
 Donald and Susan Lauffer  
 Brent and Lucia Laughlin  
 J. Michael and Eunice Lawler  
 Carol Lawson  
 Edward Lawson  
 William Lawson  
 Dennis and Becky Laxson  
 Jeff and Jamie Lazalier  
 Martyn Lease  
 Lee Supply Company  
 Barbara Lee  
 Douglas and Renee Lee  
 Virginia Lee



Joe and Lois Leftwich  
The Lehman Foundation  
Don and Penny Lehman  
Mark Lehman  
Charles and Viola Leida  
Jeannie Lewan  
Donald and Marie Lewis  
Elizabeth Lewis  
Michael Lewis  
Scott and Mary Lewis  
Richard and Patricia Lieser  
Robert Lieser  
Life Design Nutrition  
Lighting, Inc.  
James and Kay Limke  
Carrie Lindsay  
Dan and Brenda Lindsey  
Jennifer Lindsey  
LIO Properties, LLC  
John and Pamela Sue Lissau  
Bess and Grant Livingston  
Jane Livingston  
LMI Finishing  
James Lockhart  
Sandra Loerch  
Wallace and Ruth Loerch  
Dennis and Joyce Lohrenz  
Corey Lollis  
John Looper  
James and Barbara Lopez  
Carrie Lopresti  
The Lowe Family Trust  
Joe and Dorothy Lowman  
Marjorie Lubin  
Lucas Controls Company, Inc.  
William Lucia  
Robert and Patricia Lucy  
Lulu's Sweet Shoppe LLC  
Eric Lundt  
Robert and Nancy Lynch  
Patsy Lyon  
Bob and Janice Lyons  
Elizabeth Macedo  
Neill Mackay  
Madalene Church  
Gary and Donna Maddux  
Sara Malone  
Susan Manning  
Robert and Frances Mannix  
Marla Mansfield  
Robert and Dora Markle  
Rozetta Marple  
Dean and Andrea Sanseverino Martin  
Don and Carol Marlin  
Gerald Martin  
James Martin  
Lee and Mary Martin  
Lillian Martin  
Lynn Martin  
Robert and Virginia Martin  
Samuel and Nancy Martner  
David and Melinda Mast  
Sharon Mathewson  
Sidney Matles  
Thomas Matson  
Jim and Valerie Maxey  
John Maynard  
Kelli Ann Maynard  
Ida McAllister  
Daniel and Anita McAndrews  
Phillip McCall  
Sam and Patricia McCall  
Robert McCartney  
Donna McClellan  
Steven and Victoria McClenny  
Gary and Carol McClure  
Robert and Judy McCormack  
Julia McCormick  
Bob and Judi McCoy  
James McCoy  
Patricia McCune  
The McDaniel Company  
Jeannie McDaniel  
Norma McDonald  
Charles and Barbara McEntee  
James and Mary McFarland  
Martin and Veda McGinty  
Thomas McGovern  
Philip and Linda McGowan  
Lt. Col. Corrine McIlquham  
Chester and Jimmy McKeon  
Kathleen McKeown  
Jerry McKinney and Annette Morey

Billy and Julie McLaughlin  
Barney McLaughlin and Marilyn Fraser  
Lonnie McLaurin  
Charles McLennan  
Shirley Ann McManigal  
Judith McMillen  
Leighanne McMillen  
Robert and Jeanette McQuitty  
Roy and Mary Mead  
Ruth Means  
L. D. and K. C. Meason  
Michel and Mary Ann Medawar  
Jeri Medford  
Jack and Mona Meek  
Bill Mehlhorn  
M.J. Mencher  
Ms. Meridian  
Clarence and Delores Messick  
Gerald and Jerri Messner  
William and Sara Meyberg  
Peggy Meyer  
Anthony and Pamela Michog  
Midwest Title Services, INC.  
Houghton Mifflin  
Carey Miller  
Carol Miller  
Christopher Miller  
David and Esther Miller  
Mark Miller  
Robin Miller  
Sue Miller  
Susie Miller  
Willa Millhollon  
Evelyn Mills  
Malcolm and Paula Milsten  
Marc and Mary Milsten  
Miratech Corp.  
James and Patsy Mitchell  
Linda Mitchell  
Masamitsu Mitchell  
Pam Mitchell  
Joseph Mitchell  
James Mitschke  
Shirley Mock  
Philip and Susan Moldenhauer  
James B. Monroe  
John and Barbara Montgomery  
Emma Rose Moore  
John and Christie Morehead  
Kent Morlan  
Terrie and Kent Morlan  
Bert Morphis  
Bill Morrison  
Sara Morrison  
Joy Morse  
Donna Morton  
Jack Morton and Karen Long  
James and Donna Marton  
Mary Moser  
Mudd Real Estate Co.  
Vernon and M. Shiela Mudd  
Thomas and Jannette Mullen  
Jonita Mullins  
Muskogee Foot Clinic  
Tressa Mustion  
Jerry and Fauneal Nash  
John and Sally Neas  
Summer Neel  
Joseph and Susan Neely  
Scott and Kaye Neff  
Charles Nelson  
Don and Nancy Nelson  
Jerry and Donna Nelson  
Margaret Nelson  
Melanie Nelson  
Michel and Barbara Nelson  
Rick and Janet Nelson  
Armon and Joann Newburn  
Martin Newman  
Russ and Gail Newman  
Patrick and Jane Newman  
Richard and Shelley Nichols  
Gordon and Catherine Nielsen  
Mark and Mary Nielsen  
David and Carolyn Nierenberg  
Ron and Kaye Nofziger  
William Norman  
Jeff and Ellen Northing  
Rick and Mary Nurriestearns  
George and Frieda Odell  
Don and Helen Oden  
Steve and Beverly Oden  
Oklahoma Heart, Inc.

ONEOK Foundation Inc.  
J. C. and P. D. Onorato  
Doris Orr  
Fred and Judy Orr  
James and Madeline Osborne  
Peggy Osborn  
William and Amelia Osteen  
Raymond and Shirlee Ostensen  
Herbert Oven  
William and Paula Owens  
Leonard and Karen Paine  
Reece Palmer  
Thomas and Jennifer Palmer  
W. Allen and Susan Palmer  
Panera Bread  
Victor and Janet Parachin  
Mark and Julie Parette  
Cheryl Parker  
Mary Parker  
Hazel Passmore  
Jeanette Patterson  
Katherine Patterson  
Carl and Penny Patton  
David Patton  
Michael Payne  
Duncan and France Payne  
Richard and Norma Payne  
Steven Peak  
Robert and Harriet Peake  
Stephen Pearsall  
Mary Kay Perez  
Debra Perkins  
Burna Perry  
Carla Perry  
Carole Perry  
Leon Perry  
Loraine Perry  
M. Janie Perry  
John Peters and Andrea Kunkel  
Charles Petersen  
Betsy Pettit  
Walter Pettit  
James Pharr  
J. R. and Carol Phelps  
Marvin and Dot Phillips  
Phymed Billing & Consulting, L.L.C.  
Bradley Pickle  
James and Carol Pielsticker  
George and Elaine Pikler  
Miles Pinedo  
Vernon Pinkey  
Bonita Plymale  
David Poarch  
Mary Points  
Stephen and Sarah Poleman  
Michael and Maura Pollak  
Steve Pollak  
Darrell and Ethel Pool  
Evangella Pope  
Don and Julie Porter  
Marjorie Porter  
Nina Poston  
Robert Poteet  
Bobbie Potter  
Garry and Shirley Potter  
Harry Potts  
Ray and Rebecca Poudrier  
Robert and Carolyn Powers  
Ramon and Phyllis Prange  
Prattville Tag Agency  
George and Sue Preece  
Preferred Community Choice PPO  
Lauraleene Price  
John and Catherine Prince  
Joan Pringle  
Mary Pringle  
Robert and Leslie Pritchard  
Frank and Teresa Proctor  
Pump Techs, Inc.  
June Purcell  
John Purdy  
David and Ruth Qualls  
Gary and Carolyn Quiggle  
Tom and Carol Quinn  
Richard and Leslie Quinton  
Jayne Radcliffe  
Ram Utility Construction, Inc.  
William and Avis Rambo  
Lee and Grace Raney  
Keith Rapp  
Fred and Loretta Raschen  
Robert and Virginia Ratliff  
George Raybourn

Nancy Raybourn  
Howard and Ruth Reather  
Thomas and Cheryl Redman  
Deborah Redmond  
Karen Reed  
Leslie Reed  
Jerry and Barbara Reeves  
Robert and Dianne Renkes  
Doug and Maureen Ressler  
Peggy Revard  
Jack and Katie Reynolds  
Rondalyn Reynolds  
Rollie and Sammie Rhodes  
Betty Rice  
David and Kelly Rice  
Steve and Anna Rice  
Edwin and Yvonne Richards  
Leonard and Olga Richards  
Bob and Charlotte Richert  
Marilyn Riggs  
Anthony and Linda Ringold  
Francine Ringold  
David Ritchie  
Ayn Robbins  
Thomas and Sheryll Robbins  
Bruce and Tonya Roberts  
Charles Roberts  
Deanna Roberts  
Jimmy and Virginia Roberts  
Douglas and Sula Robertson  
Thomas Robertson  
Marvin and Faye Robinowitz  
James and Mary Robinson  
Maurice Robinson  
Kathleen Rodgers  
Patricia Rodriguez-Lozano  
Howard Roemer  
James and Heidi Rogers  
Jan Rogers  
Matthew and Lucretia Romero  
Romine Family Revocable Trust  
T. Robert Root  
Donald and Doris Rose  
Mariella Rose  
Ricki Roseman  
John Rothman  
Theresa and John Rothschild  
Roger and Charlotte Rowe  
Robert and Patsy Rowland  
Viola Rowland  
Peggy Rowley  
Wanda Rumsey  
Richard Ruprecht  
Harry Ryburn  
David and Nancy Sahler  
St. Francis Hospital Professional Staff  
Ben and Mary St. Louis  
Ronald and Mary Jo Saizow  
Lyn Saltzman  
Sand Springs United Methodist Church  
Jack and Pauline Sanders  
Edgar and Isabel Sanditen  
Mary Sanditen  
Mitch Sanditen  
Scott and Jolene Sanditen  
Peter Sandretto  
Leo and Maralynn Sant  
Larry Sappington  
Sharon Saulsberry  
Carolyn Scarth  
Forrest Scearce  
George and Kim Schaefer  
Matt and Marla Schaefer  
James Scheiper  
E. Joe and Lanna Schelbar  
Stephen and Helen Scherffius  
Beverly Schermerhorn  
Mary Schiller  
Andrea Schlanger  
Joseph and Judith Schlecht  
Loren and Marsha Schmidt  
Floyd Schoenhals  
Greg and Susan Schulte  
Dennis and Sandi Schultz  
Scott Schumacher  
C.Kay Schwartz  
Stephen and Lynn Schweikhart  
Jeanne Scott  
Dr. and Mrs. John E. Scott  
Robert and Shirley Scott  
Roger and Dorothy Sedivy  
Peter and Ramona Seitz  
Richard Miller Seldon and Janette Miller

Betty Sellars  
 Servants Sunday School Class  
 Wayne and Patricia Seward  
 Robert Sexton  
 Mr. and Mrs. Chalmers M. Seymour  
 Jeff and Debbie Shaffer  
 John and Eileen Shane  
 Pat and Genie Shannon  
 Alan and Jan Sharks  
 David Sharp  
 Wendy Sharp  
 Virgil and Erlene Shatto  
 Betty Shaull  
 Thomas Shaw  
 Margaret Shea  
 Virginia Shelton  
 Edward and Betty Sherman  
 Peter and Patricia Shillingford  
 Christina Shipley  
 Michael and Cathy Shipman  
 Susi Simmons  
 Dan Simone  
 Tresa Simons  
 Catherine Sims  
 Bruce and Kary Ann Singer  
 Glen and Nettie Singer  
 Marjorie Singer  
 Susan Singh  
 J. Gayle Sissons  
 Sisters In Song  
 Donald and Betty Sitter  
 Joyce Skalla  
 Keith and Carla Skelton  
 Darlyn Slater  
 Ronald and Nancy Slauenwhite  
 Larry Slawson  
 Phyllis Slone  
 Beverly Smith  
 Cloris Smith  
 Colleen Smith  
 David Smith and Lyndel Colglazier  
 Fred and Sharon Smith  
 June Smith  
 Latrice Smith  
 Mona Smith  
 R. M. Smith  
 Rex Smith  
 Robert Smith  
 Robert and Sandra Smith  
 Timothy Smith and Deanna Isenbart  
 William and Sharon Smith  
 Jim and Carol Snively  
 Dr. Blane Snodgrass  
 Edwin Snyder, II  
 Jeanne Snyder  
 Kristopher Snyder  
 Tony Solow  
 Louise Somers  
 Raymond and Katherine Sorenson  
 Nancy Sossin  
 Clifford and Gertrude Sousa  
 Southern Hills Baptist Church  
 Southern Hills Methodist Church, Inc.  
 William Southmayd  
 Don and Lisa Spaugy  
 David Spears  
 Specialty Insurance Managers, INC.  
 R. T. and Juanita Spillers  
 Spirit Bank  
 Louis and Susan Stackler  
 Deemer and Kelli Stacy  
 Serena Staires  
 Kay Stamper  
 Lenice Stanford  
 Bobbie Stauss  
 Schuyler and Kathleen Steelberg  
 Dennis and Vickie Stephens  
 Cheri Stephenson  
 Jerry Stevenson  
 Mary Stewart  
 Lee and Mary Stidham  
 Edgar and Virginia Still  
 Linda Stocker  
 Rebecca Stocker  
 Jean Stokes and Sylvia Russell  
 Mark and Marti Stokes  
 Lawanna Storm  
 Kristine Stover  
 Glenna Streetman  
 Bridget Stroud  
 Phyllis Stroud  
 Chris and Rachel Strunk  
 Douglas and Denise Stuart

Richard and Donna Stuber  
 Steve and Shonda Studtmann  
 Goldie Sturgeon  
 Kerry and Judith Sublette  
 Robert and Jeanne Sullivan  
 John Sulton  
 Salley Suttmiller  
 Phillip Suttle  
 Eric and Jill Suttton  
 Mary Margaret Sutton  
 Barbara Swain  
 Robert and Anne Swartz  
 Stephen and Barbara Swayze  
 Ross and Tia Swearingen  
 Manette Swett  
 Mark and Angela Swift  
 Robert and Marjorie Swofford  
 Marilyn Sylvan  
 Synod Of The Sun Presbyterian Church  
 Ann Szulski  
 T & A Enterprises, Inc.  
 Bruce and Gail Taliaferro  
 Mimi Tarrasch  
 Julie Tattershall  
 Janeann Taubel  
 Arthur and Patricia Taubman  
 Marilyn Taubman  
 Betty Taylor  
 James and Shirley Taylor  
 Marlin and Peggy Taylor  
 Ross and Linda Taylor  
 W. Jordan and Marie Taylor  
 Telecom Pioneers Oklahoma Chpt. 41  
 Telecommunications Systems Consulting  
 Group, Inc.  
 Dorothy Terebsey  
 Ruth Terry  
 Bill and Susan Thomas  
 Gary and Jennifer Thomas  
 Thomas Community Church  
 Janet Thomas  
 John Thomas  
 Ralph and Jane Thomas  
 William Thomas  
 Dolly Thomas-Dixon  
 Thompson Tree & Landscape Co. Inc.  
 Jim and Carol Thompson  
 Lisa Thompson  
 Michael Thompson  
 Richard and Marilyn Thompson  
 Sandra Thompson  
 Evelyn and Duane Thornton  
 Kenneth and Charlene Thornton  
 Roy and Janis Thornton  
 TK Publishing Inc. Dba Tulsa Kids  
 Dalvin and Marie Tobin  
 Gary and Leslie Todd  
 Robert and Janet Tomarkin  
 Austin and Pamela Tommey  
 Robert and Cathi Tompkins  
 Mary Lee Torbert  
 Thomas and Jennifer Towler  
 William Towner  
 Owen and Gloria Towry  
 Marianne Trammell  
 Mr. and Mrs. Walter Trapp  
 Sven and Renata Treitel  
 Robert Trickey  
 Kenneth Trinidad  
 J.E. and Nancy Trujillo  
 Belinda Tucker  
 Debbie Tucker  
 Marjorie Tucker  
 Rodger Tucker  
 Earl and Joanna Tuers  
 Raymond Tullius  
 Tulsa Community College - NEAT Team  
 Tulsa Medical Lab  
 Tulsa Women's Law Caucus/University of Tulsa  
 Tim and Nina Turner  
 Todd Turner  
 Charlotte Tuton  
 TWA Clipped Wings - Tulsa Chapter  
 Margaret Tweton  
 Robert Tyler  
 Union 8th Grade Rotary Interact Club  
 Steadman and Peggy Upham  
 Brian Urlich  
 Jerry and Tana Van Cleave  
 E. K. and Marjean Van Eman  
 Clyde and Barbara Van Sickle  
 Kelly Vanburkleo

William and Clara Vandyke  
 Preston and Barbara  
 VanHanken  
 Becky Vanwie  
 Alice Vanwormer  
 Donald and Joyce Varner  
 Bob and Cathy Vaughan  
 Dortha Vaughn  
 Quendrid Veatch  
 Ralph Veatch  
 Gayna Veltman  
 Jim Verneti  
 James and Deborah Vernon  
 Wade Veteto  
 Bill and Judy Vagle  
 Mr. and Mrs. Robert Wadlow  
 Mr. and Mrs. Billy Wagner  
 Robert Wagner  
 Ida Walker  
 W. H. and Patty Walker  
 Thomas and Susan Wallace  
 Kenneth and Jennifer Walling  
 Jane Walter  
 Richard and Nora Walworth  
 Mary Ward  
 Mary Jane Warne  
 S. E. and Sally Warrington  
 Waterworks Studio  
 Jeffrey and Carol Watkins  
 Ron and Carol Watkins  
 Chuck and Julie Watson  
 Mark Watson  
 Ronnie and Anita Watson  
 Inalea Weathers  
 William and Judy Weaver  
 Tecla Webber  
 Edgar and J. J. Webster  
 James and JoAnn Webster  
 Mary Webster  
 R. G. and A. M. Webster  
 Jeffrey and Elizabeth Weinstein  
 Abraham Weizenberg  
 Shelly Welch  
 Ronald and Linda Wells  
 Bruce Wenger  
 Suzanne Wenger  
 Donald and Connie Wertz  
 Robert and Melinda Wesneski  
 Charles and Mary West  
 Frank and Sandi Westbrook  
 Robert and Elva Westermarck  
 Bernard and Marcia Westhoff  
 Raymond and Carole Weygard  
 Elizabeth Wheat  
 Deni Wheeler  
 Denise Wheeler  
 Eloise White  
 James and Joyce White  
 John and Susan White  
 Randy and Sandra White

Donald and Janet Whited  
 Albert and Lacy Whitehead  
 Whole Foods Market Volunteer Group  
 Charles and Carolyn Wickstrom  
 Barbara Widner  
 Richard and Dolores Wiedenhoeff  
 Marcia Wilbanks  
 Stephanie Wilbanks  
 Thomas Wilkins  
 Joseph Wilkinson  
 Mary Ann Wilkinson and Martha Dixon  
 Blair Williams  
 Douglas and Esther Williams  
 Greg and Connie Williams  
 Jean Williams  
 Judy Williams  
 Mary Williams  
 Robert and Mariah Williams  
 Dixie Willson  
 Keith and Sheila Willson  
 Dixie Wilson  
 Lisa Wilson  
 Martha Wilson  
 Robert Wilson  
 Robert and Margaret Wilson  
 Ronald and Barbara Winder  
 Jane Wiseman  
 Bill Witt  
 Gregory and Susan Woitte  
 Womens Law Cancus. University of Tulsa  
 Charlene Wood  
 Philip and Emily Wood  
 T. P. Woodward  
 John and Pauline Woolever  
 Willis and Marinel Woolrich  
 Lance Woolsey  
 Ronda Wooten-Hickey  
 J.C. and Marilyn Worden  
 Charles and Jean Worrell  
 Cynthia Wright  
 John Wright  
 Keith and Patty Wright  
 Richard and Cynthia Wright  
 Sarah Wright  
 Raymond and Sharleen Yarroll  
 Patricia Yelton  
 York Electronic Systems, Inc.  
 Kent and Jeanette Young  
 Margie Young  
 Richard and Rebecca Young  
 Thomas Young  
 K. A. Youngblood  
 Dr. and Mrs. Yount  
 Rex and Catherine Zedalis  
 David and Jane Zemel  
 Mary Ziegler  
 Ronald and Pam Zitzman  
 David and Toni Zucconi  
 Kurt Zumwalt

**Every dollar received  
 allows us to distribute  
 enough groceries  
 for seven meals.**



## Food Bank Staff

**Executive Director**  
Sara J. Waggoner

**Associate Director of Business Development**  
Cindy Cummins

**Deputy Director of External Relations**  
Carol Foley

**Director of Administration**  
Darian Walker

**Director of Facilities**  
John McCarthy

**Director of Agency Relations**  
Joanne Burdick

**Director of Operations**  
Ryan Walker

**Director of Volunteer Services**  
Kate Pelizzoni

**Director of Culinary Service**  
Jonathan Haring

**Director of Marketing and Communications**  
Cindy Stevens

**Donor Relations Manager**  
Ken Bacon

**Manager of Children's Programs**  
Cathy Elliott

**Individual Giving Manager**  
Amy Cannon

**Special Events Manager**  
Frances Bevel

**Food Drive Manager**  
Susan Hartman

**Administrative Assistants**  
Shenara Culley  
Liz Ingersoll

**Assistant Director of Culinary Services**  
Sean Shannon

**Receptionist/Clerk**  
Whitney Foreman

**Office Assistant**  
Christine Smith

**Warehouse Manager**  
Ron Moton

**Operations Clerk**  
Will Maples

**Customer Service Coordinators**  
Donna Boggs  
James Hunsberger

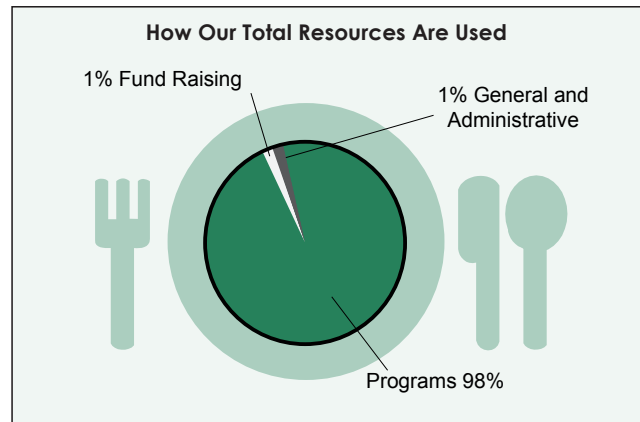
**Distribution Coordinator**  
Ed Robinson

**Product Recovery Coordinator**  
Jason Raus

**Shopping Room Coordinator**  
Eric Coley

**Warehouse Workers/Drivers**  
Joseph Bowie  
Alan Grunewald  
Chad Lawmaster  
Johnny Mahaffey  
Jeff Rivkin  
Kenny Roberts  
Scooter Vaughn

**Maintenance**  
Lee Greer



## Financial Statements

JUNE 30, 2009

Because of our sound financial management and commitment to our vision and mission, only 2 percent of our total resources goes toward administration and fundraising, allowing us to devote 98 percent to *fighting hunger and feeding hope*.

### Statement of Financial Position

#### Assets

##### Current Assets

Cash and Investments	\$3,105,594
Accounts and Pledges Receivable	398,766
Prepaid Expenses	28,016
Inventory - Purchased Product	246,768
Inventory - Donated Product/USDA Commodities	2,556,410

**TOTAL CURRENT ASSETS** **\$6,335,554**

Property and Equipment Less Accumulated Depreciation	9,375,648
Capital Campaign Pledges Receivable	131,017
Operating Endowment	443,568

**TOTAL ASSETS** **\$16,285,787**

#### Liabilities and Net Assets

##### Current Liabilities

Accounts Payable	\$38,381
Accrued Expenses	95,981

**TOTAL CURRENT LIABILITIES** **\$134,362**

##### Net Assets

Temporarily Restricted	\$3,230,531
Permanently Restricted	61,088
Unrestricted	12,859,806

**TOTAL NET ASSETS** **\$16,151,425**

**TOTAL LIABILITIES AND NET ASSETS** **\$16,285,787**

### Statement of Financial Activities

#### Revenue

Product Contributions (85%)	\$15,853,503
Shared Expense Revenue (2%)	377,247
Contributions (9%)	1,598,289
Contributions - non-cash (< 1%)	48,515
Purchased Product Sales (4%)	753,713
Commodities Income (4%)	735,417
Other Income (< 1%)	49,472
Investment Income	(679,455)
Net assets released from restriction (1%)	22,305

**TOTAL UNRESTRICTED REVENUE** **\$18,759,006**

#### Expenses

Program Services (98%)	\$18,925,699
General/Administrative (1%)	162,650
Fund Raising (1%)	285,091

**TOTAL EXPENSES** **\$19,373,440**

A complete audit is available on request by contacting the Food Bank at (918) 585-2800.



## **Vision**

*Food security, with dignity, for all Eastern Oklahomans.*

## **Mission**

*Feed the hungry of Eastern Oklahoma through  
a network of Partner Programs and engage  
our communities in ending hunger*



1304 N. Kenosha Ave.  
Tulsa, OK 74106  
(918) 585-2800  
[www.cfbeo.org](http://www.cfbeo.org)